

Application Explorer

If you develop in APPX, you need *Application Explorer*



The 'Swiss Army Knife' of utilities, Application Explorer (AXE) is a collection of programs that extend the built-in functionality of the APPX cross reference utilities.

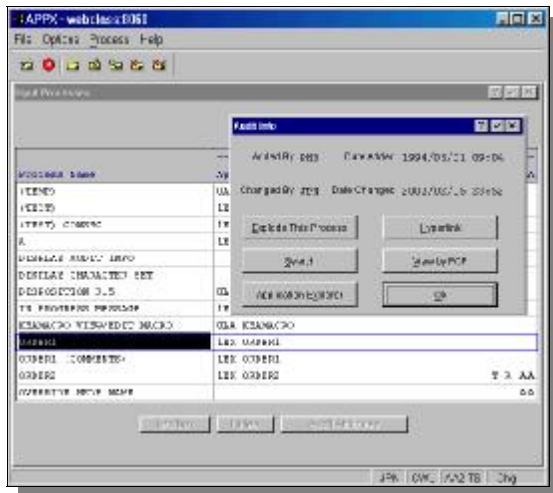
The APPX cross reference utilities allow you to see where a process is used, but Application Explorer goes further, analyzing your entire set of applications at once and allowing you to instantly see all relationships between processes.

Application Explorer also allows you to search for constants, or search for ILF keywords used in conjunction with a certain file/field names. This is invaluable for finding anything that may have been hard coded in your application, or for tracking difficult to find bugs, for example, by searching for all SETs or COMPUTEs using the CUSTOMER BALANCE field.

We even include a utility to find all the unused processes in your applications, helping you eliminate all the 'dead weight' that accumulates over the years.

Application Explorer is tightly integrated with the APPX Application Design environment, making it easy to access AXE during application design, and conversely, access Application Design from within AXE.

Version 2.0 of Application Explorer will feature a new GUI look & feel, as well as a batch process editor.



Application Explorer is tightly integrated with the APPX design environment, allowing you to access the main program functions directly from within APPX.

While in AXE, anytime you see an APPX process name/frame/image, you can drill directly to that location. This makes working with the results of a Search a real time saver.

You don't often need a tool like Application Explorer, but when you need it, you really need it.



C.A.N.S.Y.S. West Limited
Lower Level, 111 Riveroaks Drive
Winnipeg, Manitoba R3J 1R2
Canada

Phone: +1 (204) 925-6161
Fax: +1 (204) 925-6166
Email: sales@cansyswest.com
Web: www.cansyswest.com

Pricing: \$800 (US) per server, regardless of the number of users or designers.
Requirements: APPX 4.1 or higher, Java Client.
Prices/specifications subject to change.